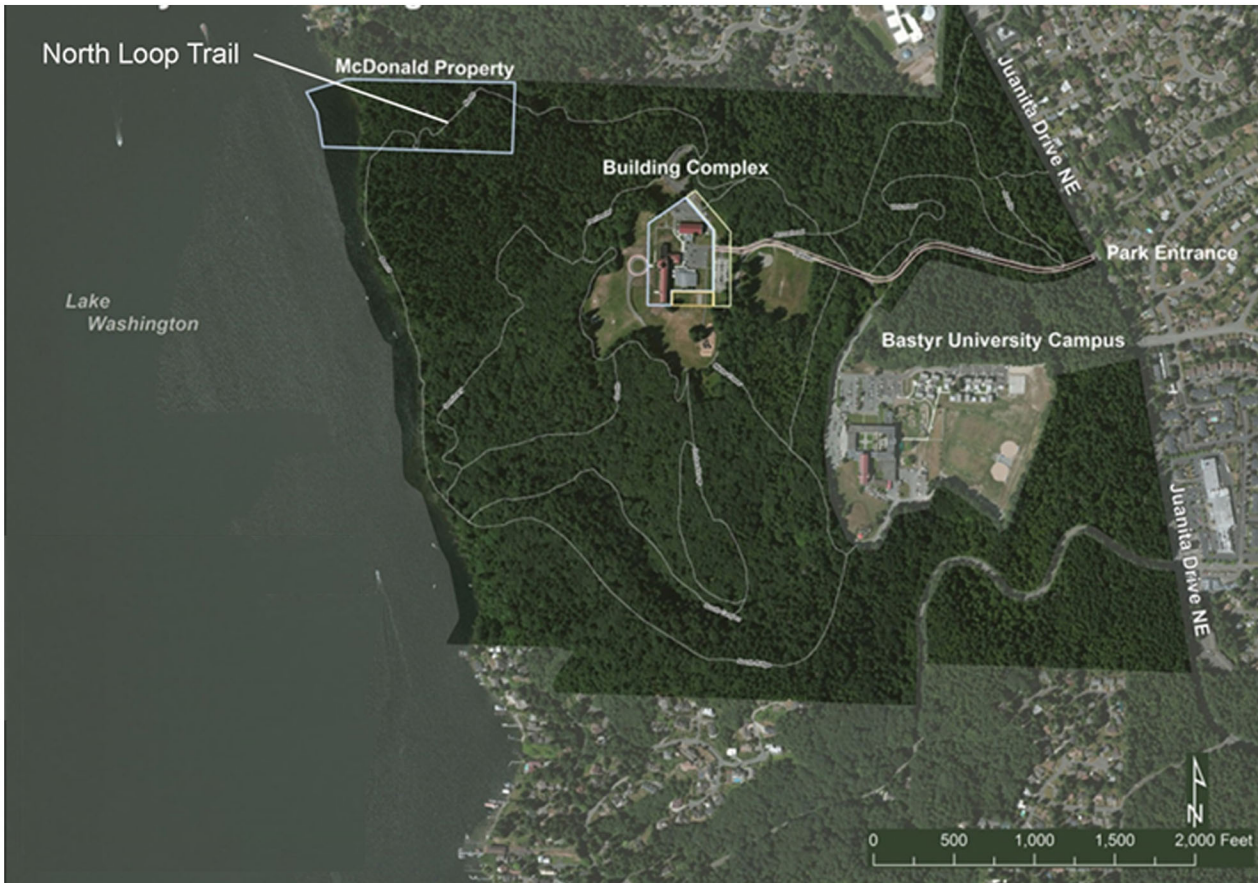


LODGE AT SAINT EDWARD

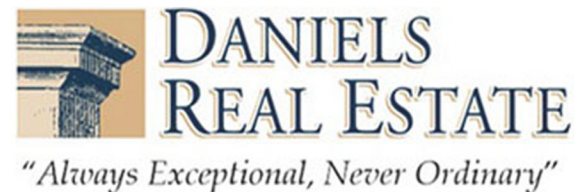
Ten Acre Park Expansion!



McDonald property added to northwest corner of park



- ***The McDonald property was acquired by Daniels Real Estate as a part of their development project and deeded to State Parks in 2018.***
- ***This land is now available for public use and enjoyment and is accessed via the North Loop Trail.***
- ***This land will remain public park land in perpetuity.***



For more information: <http://parks.state.wa.us/857/Saint-Edward-Planning---Seminary>